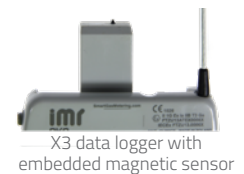


**IMR adapters** are state of the art intrinsically safe devices developed for mechanical installation of X3 diaphragm gas meter data loggers. The family of IMR adapters is designed and dedicated to a wide range of gas meter models of top companies in gas meter market (mostly diaphragm ones)

- ultra-compact, robust design to withstand harsh environments
- RJ11 replicated pulse output (optional)
- compatible with all popular meters
- on request, adapters can be prepared for other meters used in your local market
- designed in accordance with safety requirements with preserved sealing points

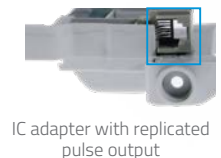
Adapters are completely compatible with all available X3 gas meter data loggers developed by AIUT.

- Passive IC adapters are developed for X3 data logger equipped with magnetic sensor coupled with gas meter counter
- Active IC adapters are developed for X3 data logger without the magnetic sensor. Adapters with built-in tamper detection functionality: dismantling limit switch, external magnet field detection



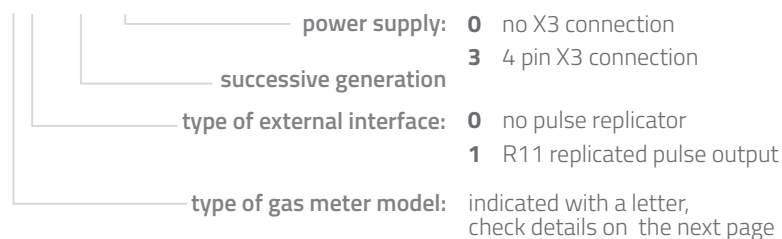
### Replicated pulse output

Some of the adapters are equipped with replicated pulse output providing meter pulse output connections to other meter pulse utilization devices



### Adapter order number

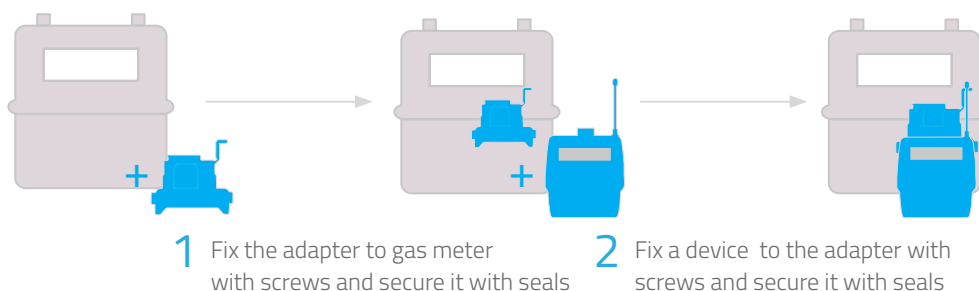
IC XY15 Z002



Adapters are delivered with complete mounting kit (seals + screws) necessary for proper installation on gas meter.

### Installation

The installation procedure is very intuitive and can be performed in a couple of minutes. It varies depending on used gas meter, yet the general procedure is as presented:



Type of adapter	Type of gas meter	Meter Index	Replicated pulse output (optional)	Adapter with embedded sensor
	<ul style="list-style-type: none"> <li><b>Honeywell/Elster/Kromschroeder</b> BK G1.6-BK G6</li> <li><b>Gas Souzan</b></li> </ul> <p>Z3, Z6 series totalizer, steel case gas meter</p>		NO	NO
	<ul style="list-style-type: none"> <li><b>Honeywell/Elster/Kromschroeder</b> BK G1.6-BK G100</li> <li><b>Gas Souzan</b></li> </ul> <p>Z3, Z6 series totalizer, steel case gas meter</p>		YES (IC E115)	YES
	<ul style="list-style-type: none"> <li><b>Landis + Gyr / AMPY</b> Model 750, Model 1010</li> <li><b>Honeywell/ELSTER AMCO/AMPY</b> BK G1.6-BK G6</li> </ul> <p>Z4 series totalizer, aluminium case gas meter</p>		NO	NO
	<ul style="list-style-type: none"> <li><b>Landis + Gyr / AMPY</b> Model 750, Model 1010</li> <li><b>Honeywell/ELSTER AMCO/AMPY</b> BK G1.6-BK G6</li> </ul> <p>Z4 series totalizer, aluminium case gas meter</p>		YES (IC L115)	YES
	<ul style="list-style-type: none"> <li><b>Metrix</b> UG1.6, UG2.5, 6G4, 6G5, 2G10, 2G16, 2G25, 2G40, 2G65, UG4, UGT4</li> <li><b>Metrix Italia</b> UG-ALU</li> </ul>		NO	NO
	<ul style="list-style-type: none"> <li><b>Metrix</b> UG1.6, UG2.5, 6G4, 6G5, 2G10, 2G16, 2G25, 2G40, 2G65, UG4, UGT4</li> <li><b>Metrix Italia</b> UG-ALU</li> </ul>		YES (IC M115)	YES

Type of adapter	Type of gas meter	Meter Index	Replicated pulse output (optional)	Adapter with embedded sensor
<p>IC S013</p> 	<ul style="list-style-type: none"> <li><b>Itron/Actaris/Schlumberger</b> Gallus 2000 G1.6, Gallus 2000 G2.5, Gallus 2000 G4</li> </ul> <p>"o" series totalizer</p>		NO	NO
<p>IC R015</p> 	<ul style="list-style-type: none"> <li><b>Itron/Actaris/Schlumberger</b> RF1, ACD</li> </ul> <p>"o" series totalizer</p>		YES (IC R115)	YES
<p>IC S015</p> 	<ul style="list-style-type: none"> <li><b>Itron/Actaris</b> U6, U16</li> </ul>		YES (IC S115)	YES
<p>IC C015</p> 	<ul style="list-style-type: none"> <li><b>Itron</b> ACD, Gallus, RF1 <i>suits OKO X3x5</i></li> </ul> <p>"c" series totalizer (Cyble)</p>		YES (IC C115)	YES
<p>IC U015</p> 	<ul style="list-style-type: none"> <li>Supports any type of gas meter embedded with pulse output (also rotary and turbine gas meters with LF - Low Frequency pulse output. Prepared to mounted in a wall with screws, plastic ties or double sided tape.</li> </ul>		YES (IC U115)	YES

Type of adapter	Type of gas meter	Meter Index	Replicated pulse output (optional)	Adapter with embedded sensor
	<ul style="list-style-type: none"> <li>▪ <b>Elektrometal</b> EM G1.6, EM G2.5, EM G4</li> <li>▪ <b>Kale Kalip</b></li> </ul>		YES (IC K115)	YES
	<ul style="list-style-type: none"> <li>▪ <b>Raychem RPG</b></li> </ul>		NO	NO
	<ul style="list-style-type: none"> <li>▪ <b>Sensus</b> Cubix U6</li> </ul>		NO	NO
	<ul style="list-style-type: none"> <li>▪ <b>Pietro Fiorentini/ SamGas</b> G6</li> </ul>		NO	NO
	<ul style="list-style-type: none"> <li>▪ <b>Federal</b> FN G4</li> </ul>		NO	NO
	<ul style="list-style-type: none"> <li>▪ <b>Daesung</b></li> </ul>		NO	NO