



## M2M 4G - IDG Series

### IDG771-0T0B1

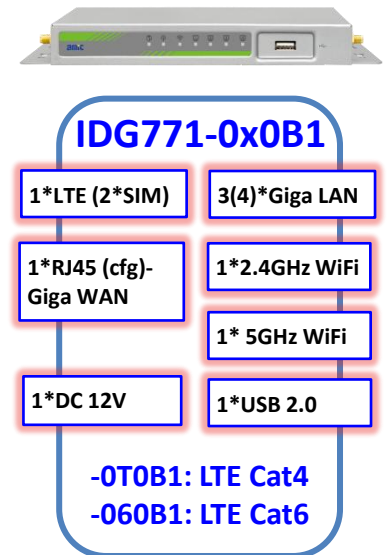
### IDG771-060B1

## 4G WiFi Hotspot

### Functions:

- Expanding LTE based WAN connection for various IP networks at instant, including enterprise , industry, surveillance , WiFi hotspot network.
- To be primarily or backup WAN for IP network enhances connection. It can expand fail-over for network at single WAN between LTE and Ether-WAN. There are dual SIMs for single LTE to achieve ISP fail-over when primarily fail.
- Compact and easy to be integrated into solution. High speed device covers LTE Cat4/6/9 and four port Giga LAN. USB for log storage and future expansion.
- Capable of rich VPN tunnel technology and high throughput up to 150Mbps can build VPN tunnel between IP network/network device with remote center or allow clients to connect in for secure data transmission.
- Cellular toolkit simplifies setting and utilizes ISP service. Data usage monitoring for budget control. Self-defined SMS commands for easy and quick management.
- Both IPv4/IPv6 protocol stack meet ISP requirement. Gateway base on IP pass through or DHCP based NAT with Port Forwarding. Rich Routing function covers static, dynamic and OSPF compatible with most IP network.
- Web-UI for basic setting. CLI and Command Script for advance setting. TR-069 used with AMIT-NMS for multi-site management. SNMP used for popular network tools management.

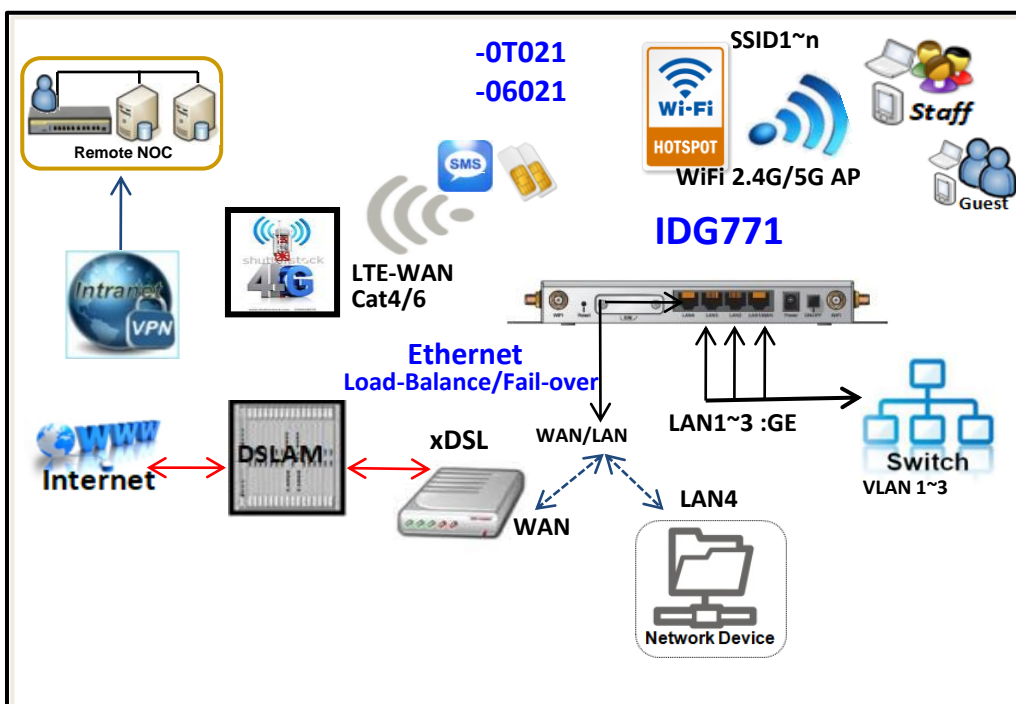
### Block Diagram:



### Application:

- SMB data center network backup
- Remote branch network
- Surveillance network
- Rural & mobile WiFi hotspot
- High speed video server

### Connection Diagram:



# Specification Summary

## Device Interface

- **LTE Module:** 1\*LTE-Cat.4/Cat.6, 2\*Nano SIM
- **Ethernet:** (1+3)\*RJ45 GE
- **WiFi:** 11ac 2T2R + 11n 2T2R
- **Log Storage:** 1\*USB
- **Power Input:** 1\* DC 12V (DC Jack)
- **Antenna Con.:** 2\*SMA (F)-LTE, 2\* SMA(M)-WiFi

## WAN & Uplink

- **WAN:** Cellular, Ether-WAN; Failover, Load Balance
- **Cellular:** 3GPP, 2G/3G/LTE, IP Pass-through, IPv4/6
- **Ether-WAN:** Dynamic IP, Static IP, PPPoE, PPTP, L2TP
- **Network Monitor:** ICMP/DNS Query

## WiFi

- **Standard:** IEEE 802.11 Industry Compliance
- **Mode:** AP Router, WDS, WDS Hybrid Modes
- **Functions:** Multi-SSID, WMM
- **Security:** WEP, WPA, WPA2, WPA-PSK, WPA2-PSK, 802.1x
- **Captive Portal:** External Web Portal

## Protocol

- **LAN & VLAN:** DHCP Server/Relay, Port/Tag based VLAN
- **IPv6\*:** Dual Stack, Static IPv6, DHCPv6, PPPoEv6
- **Port Forward:** Virtual Server, Virtual Computer, DMZ, VPN Pass-through
- **Routing:** Static, Dynamic - RIP1/RIP2, OSPF, BGP
- **QoS\*:** Policy-based Bandwidth Control and Packet Flow Prioritization

## Object

- **Scheduling:** Time Schedule List
- **Grouping:** Host Grouping List
- **Ext. Server:** Email, Syslog, RADIUS, SCEP, FTP, DDNS, IGMP
- **Certificate:** My Certificate, Trusted Certificate, Issue Certificate

## Security

- **VPN Tunneling:** IPSec, OpenVPN, PPTP, L2TP, GRE
- **Scenario:** Site/Host to Site/Host; Hub and Spoke; Dynamic VPN
- **VPN Capability:** IPSec: up to 16 tunnels
- **Firewall:** SPI Firewall with Stealth Mode, IPS
- **Access Control:** Packet Filter, URL Blocking, MAC Filter

## Administration

- **Configuration:** Web UI, CLI, Command Script, Python
- **Management:** SNMPv3 Std. & AMIT MIB, TR-069
- **System:** Upgrade, Backup & Restore, Reboot & Reset, SysLog
- **Diagnostic:** Packet Analyzer, Diagnostic Tools

## Service

- **Cellular Toolkit:** Data Usage, SMS, SIM PIN, USSD, Network Scan
- **Event Handling:** User Defined Manage/Notify Event; SMS, Mail, Syslog, SNMP Trap, System HW

## Environment

- **OP/Store Temp.:** -30°C ~ 60/70°C; -40°C ~ 85°C
- **Humidity:** 10%~95% (non-condensing)
- **Enclosure:** Metal
- **Dimension:** 225x115x25mm

## Certificate - CE

- Standards & Regulation
- EMI: EN 55032: 2015 +AC: 2016 Class B, EN61000-3/-6
- EMS: EN 55024, IEC 61000, EN61000-6
- Radio: EN 301 489, EN 300 328, EN 301 893, EN50385
- Safety: EN 60950-1, EN 62368-1

## Package Accessory

- 1\*Device
- 2\*Cellular Antenna (3dBi), 2\*WiFi Ant.
- 1\*Power Adapter DC 12V/2A
- 1\*CD (User Manual)
- 1\*RJ45 Cable

## SKU Information:

**IDG771-0T0B1-00-yy : LTE Cat.4**

**IDG771-060B1-00-yy : LTE Cat.6**

'yy': Area Variant. As below table

yy	SKU	Band	Module Certi.	System Cert.
E0	EU	B1/3/7/8/20	CE,GCF	CE
R0	Russia	B3/7/20	-	EAC
U0	US	B2/4	PTCRB, AT&T	TBD
J0	Japan	B1/9/18/19/21	Telec, NTT,KDDI	Telec
J1	Japan	B1/8/41	Telec, Softbank	TBD
T0	Taiwan	B3/7/8/28	NCC	TBD
C0	China	B3/8/39/40/41		TBD
A0	Australia	B1/3/5/7/28/40	RCM,	TBD

Comment

- Specifications are subject to change without prior notice..
- Besides CE, region Certification need to check for availability.

## Mechanic Drawing

### • Front View



### • Back View

