

## #3373 & #4023

# ANT\_Stubby\_ISM\_3G\_WiFi\_Bluetooth\_SMA(m)\_straight

**Type**

Multiband antenna

**Frequencies**

AMPS (8-894 MHz)

ISM (868 MHz)

GSM (900 MHz)

DCS (1800 MHz)

PCS (1900 MHz)

3G (UMTS 2.1 GHz)

**Mounting**

Telematic Mount

**Revision**

00



## 1. SPECIFICATION

### 1.1. Electrical Specifications

Frequencies	AMPS (824-894 MHz) ISM (868 MHz) GSM (900 MHz) DCS (1800 MHz) PCS (1900 MHz) 3G (UMTS 2.1 GHz)
Impedance	50 Ohms
Polarization	VERTICAL
Gain	2.14 dBi Max
VSWR	<2:1
Power handling	25W
Connector	SMA male
Operating temperature	-40°C to +85°C

### 1.2. Connection Specifications

Nr.1 = SMA male

Nr.2 = SMA R/A male

### 1.3. Mechanical Specifications and Dimensions

Material:

Lid: ABS

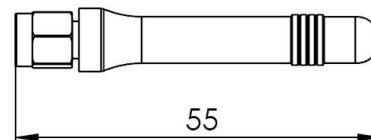
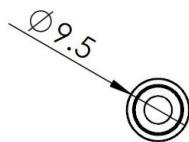
Weight:

10 g

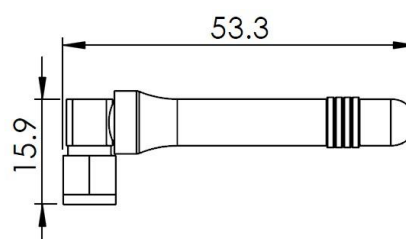
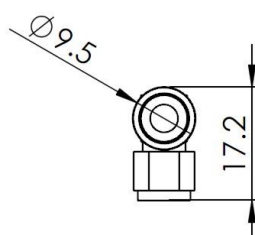
Colour:

Black (for different colours please ask our sales team)

Nr.1



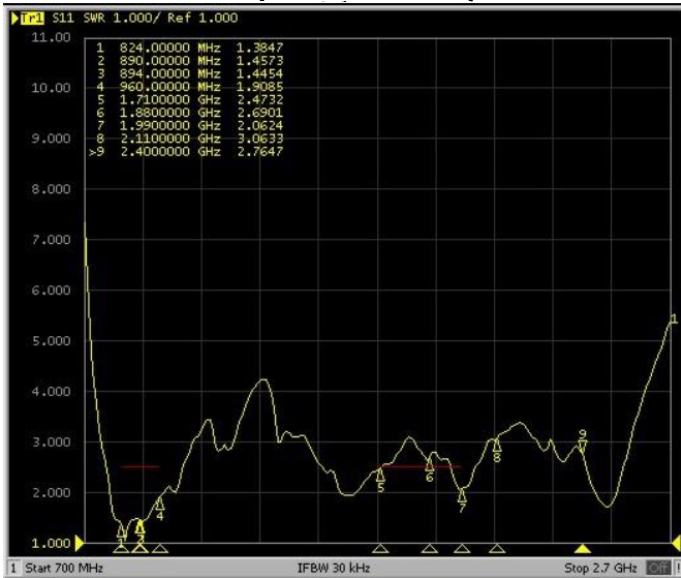
Nr. 2



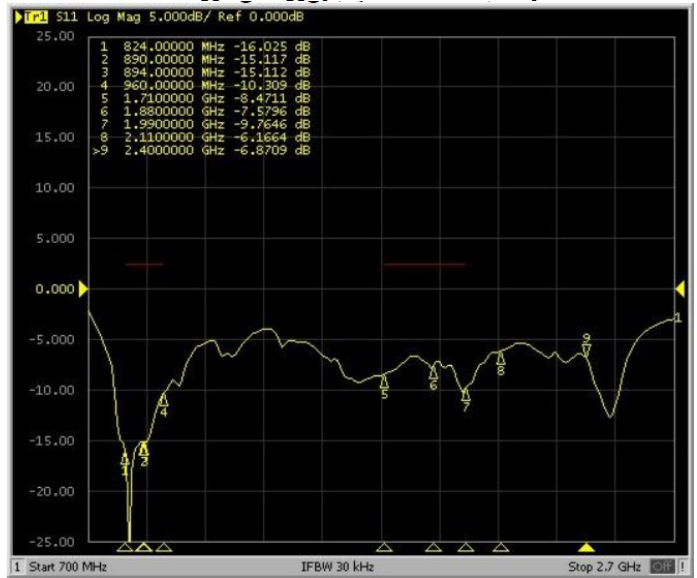
## 2. MEASUREMENT

### 2.1 SMA R/A male

**VSWR (Quad Band)**

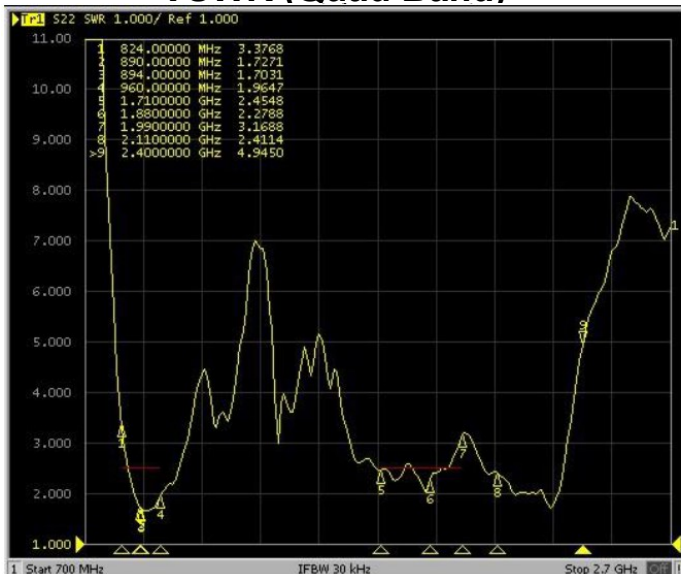


**Log Mag (Quad Band)**



### 2.2 SMA male

**VSWR (Quad Band)**



**Log Mag (Quad Band)**



### 3. Images

#### 3.1 SMA R/A male



#### 3.2 SMA male

