

#4212

ANT_Roof_ISM_3G_Bluetooth_WiFi_3m_SMA(m)_IP67_IP69K

Type	GSM antenna
Frequencies	AMPS (824-894 MHz) ISM (868 MHz) GSM (900 MHz) DCS (1800 MHz) PCS (1900 MHz) 3G (UMTS 2.1 GHz) WIFI / BLUETOOTH (2.4 GHz)
Mounting	Body Mount
Revision	00



1. SPECIFICATION

1.1. Electrical Specifications

Frequencies	AMPS (824-894 MHz) ISM (868 MHz) GSM (900 MHz) DCS (1800 MHz) PCS (1900 MHz) 3G (UMTS 2.1 GHz) WIFI / BLUETOOTH (2.4 GHz)
Impedance	50 Ohms
Polarization	Linear

Gain*	2.2 dBi Avg.
VSWR	<2:1
Operating temperature	-40°C to +85°C

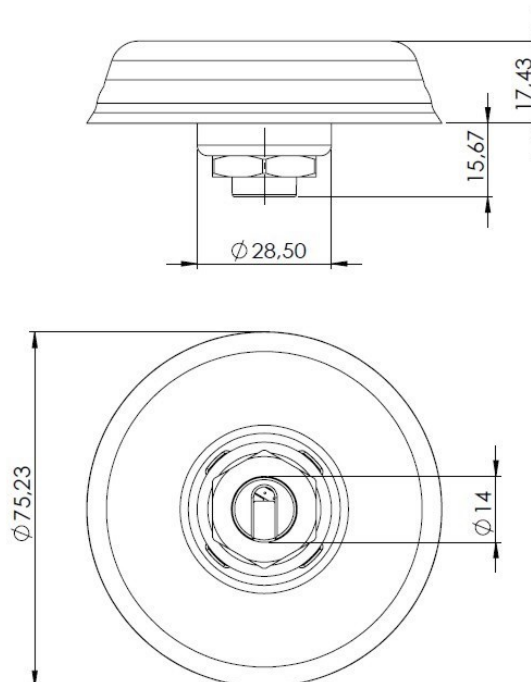
*Antenna gain depend on size of the ground plane

1.2. Connection Specifications

Connector type: FME female
 Cable: RG174U
 Cable length: 250 cm

1.3. Mechanical Specifications and Dimensions

Material: Lid: ABS/ Base: Zamak/ Gasket: TPE
 Dimensions: 77.4mm x 15.9mm (dimensions after mounting)
 Weight: 150 g (counted with 2.5m cable RG174)
 Colour: Black (for different colours please ask our sales team)



2. MEASUREMENT

2.1. Test Condition

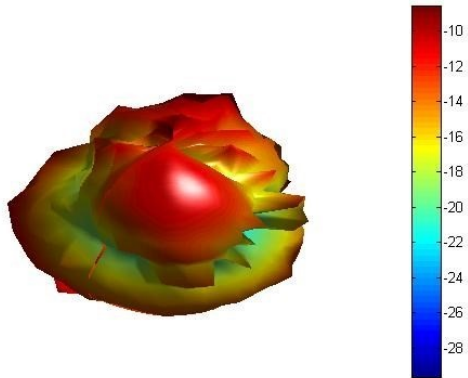
- 25cm x 25cm ground-plane
- Tested in anechoic chamber
- Cable length 30cm

2.2. Electrical Characteristics

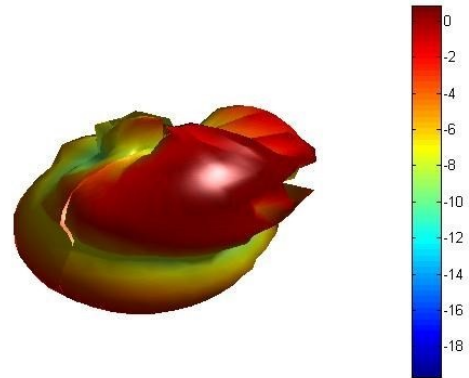
850MHz

900MHz

Freq = 0.8500GHz Az= 45 EL= 45

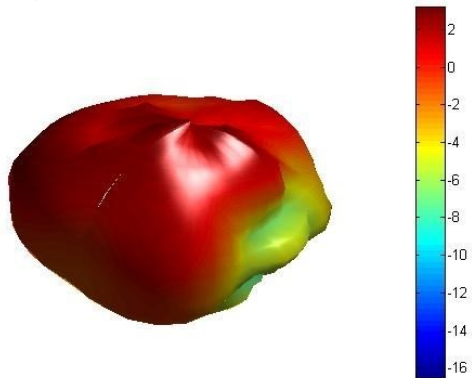


Freq = 0.9GHz Az= 45 EL= 45



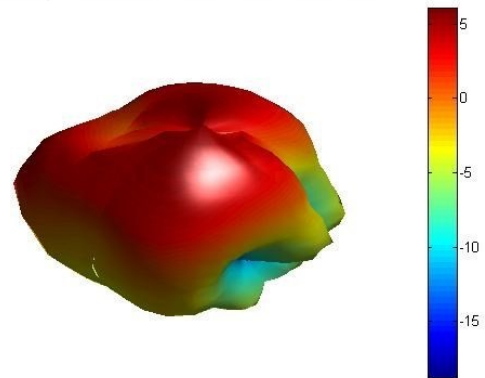
1800MHz

Freq = 1.8GHz Az= 45 EL= 45



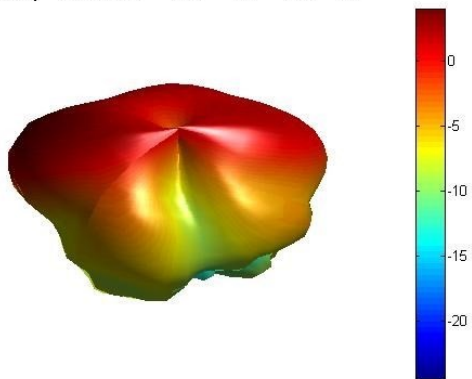
1900MHz

Freq = 1.9GHz Az= 45 EL= 45



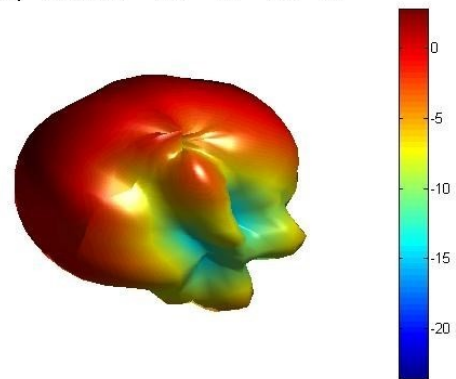
2100MHz

Freq = 2.1GHz Az= 45 EL= 45



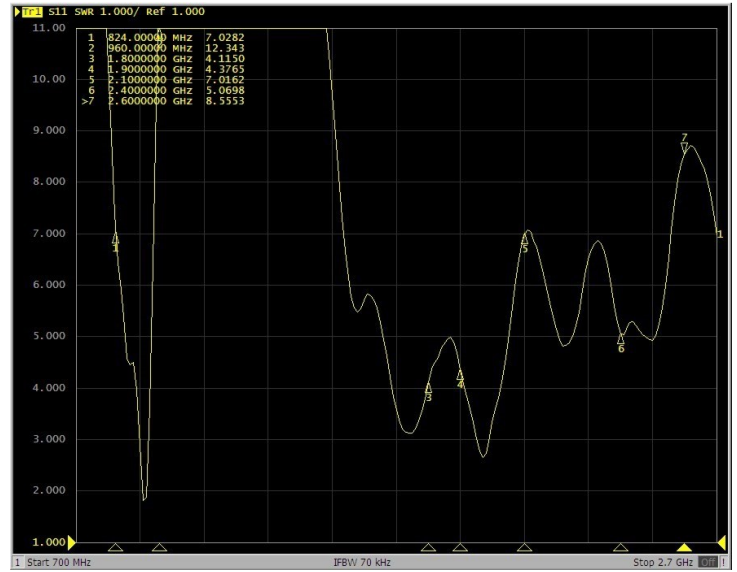
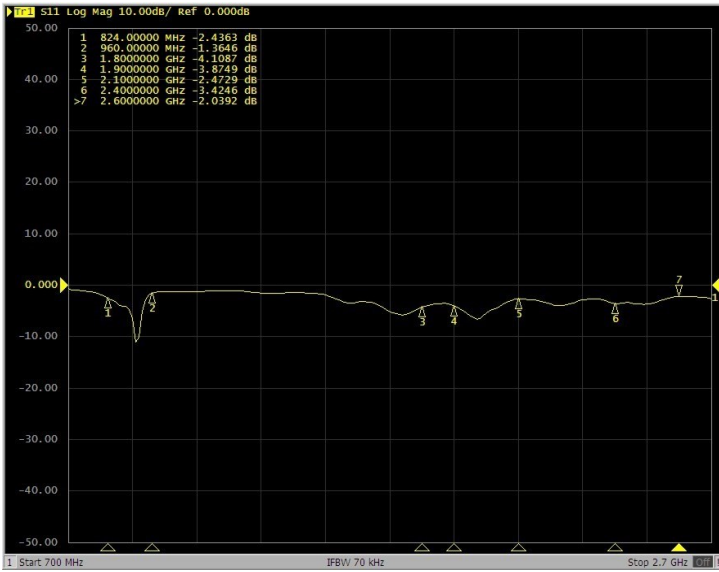
2400MHz

Freq = 2.4GHz Az= 45 EL= 45



Log Mag

VSWR



Log Mag

VSWR

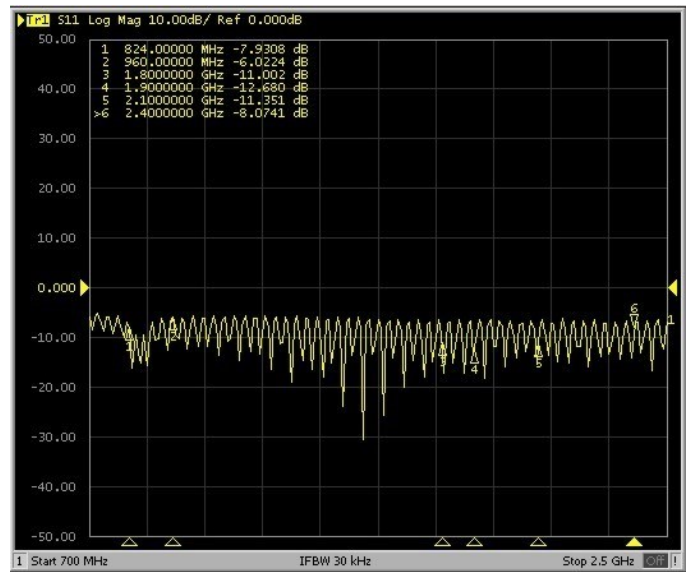
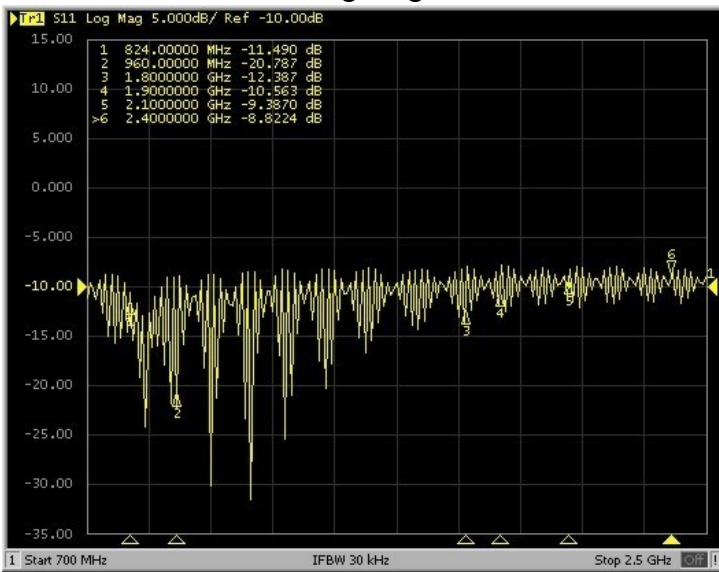


Figure 1 - Log Mag (Tested with 3m cable length)

Figure 2 - Log Mag (Tested with 5m cable length)

3. IMAGES

